

## Overview

In order to build an ideal and sustainable resort that meets the requirements of recovering the ecosystem and overcoming Phuket's difficulties, the Newest team would like to propose a project in Phuket called "Phuket - A Spiral Enchanted Resort". The main principle of our project is people-centered development, our team researches the following items: sustainable living, resilient future, and energy reset. In terms of sustainable living, we design a surrounded resort by trees and the sea. This resort will create a space to live and relax in harmony with nature. As a result, those people living here will have the chance to increase their health as well as the living standard.

## Design concept



Nautilus Shell



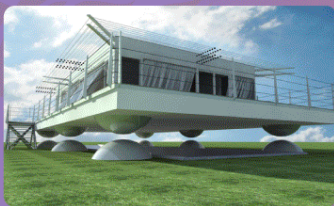
Golden Ratio



Inspired by the Nautilus Shell, Spiral enchanted resort is designed in a circular shape with the main focus being an eye-catching spiral building designed in the Fibonacci sequence with a ratio of golden ratio, allowing the room to receive natural light throughout the day as the towers rotate 3600 in the direction of the sun.



## Spiral's House



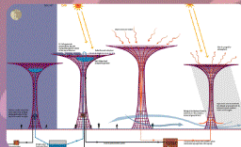
The house with the foundation is made of earthquake-resistant concrete. Around the house are high-sensitivity vibration sensors. When an earthquake is detected, the sensor activates the compressors and fills the air bags below the house and helps it to rise.

## QR App

Visitors are also supported to install and register the QR code app on their cellphones to alert if they had close contact with people who have virus, thereby minimizing the spread of the virus to the community

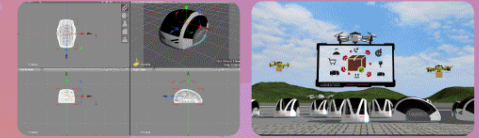


## Canopy



Canopy supertrees are vertical gardens that generate solar energy, air purification systems and rainwater collection.

## Shade3d



By the Animation function of Shade 3D, we simulate the operation and interaction in the space of animation model to create the most realistic motion.

## Smart Resort

The Newest team also build a system of research and data laboratories combining AI and IOT to model, monitor, and conserve natural resources. Regarding Energy reset, our team proposes to construct capony supertrees that are vertical gardens that have several functions like generating solar energy, filtering air, and collecting rainwater.



## Virus Scanner

The process starts with a virus prevention scanner, which will scan all visitors to the resort to ensure and reduce the possibility of virus spreading.



## Design Builder



DesignBuilder is used to analyze and simulate the heating and cooling system and lighting to save energy.