

CURRENT

The 12th Virtual Design World Cup

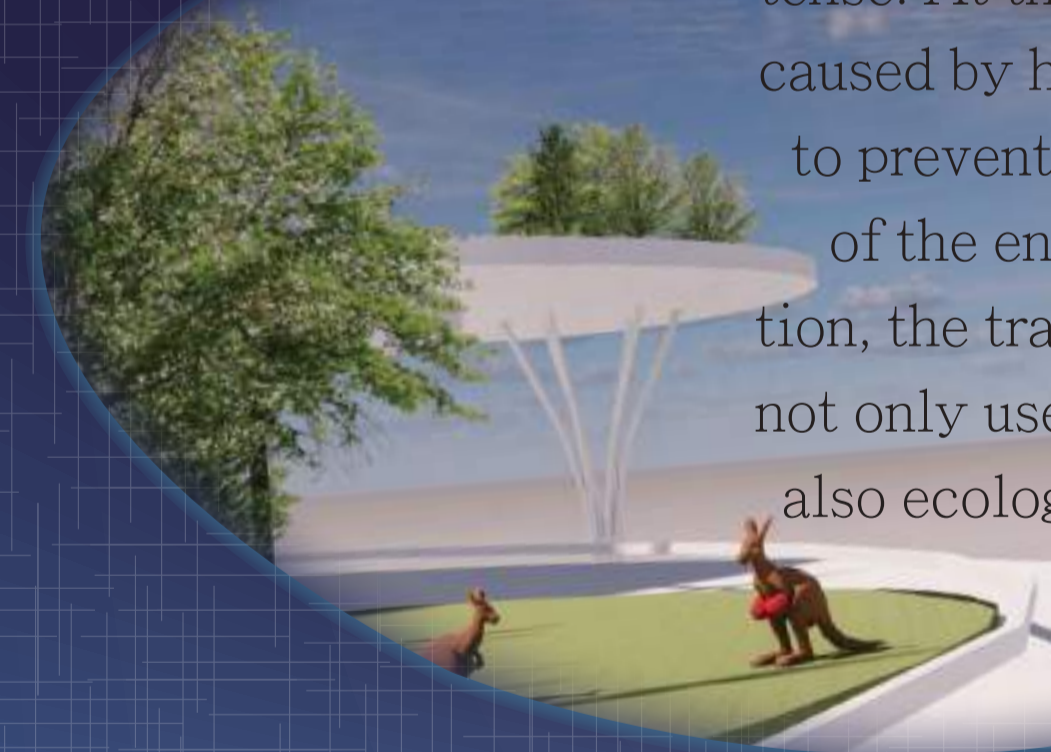


CONCEPT

As western Sydney airport becoming the essential and largest transportation center, we imagine the flow of transporting as the smoothnesses of ocean current. Besides, the context of the airport is created on the base of the interpretation of the combined Australian aboriginal totem. Finally, The display of the station are well organized, human-centered designed, and layered with a systematic approach.

ECOLOGICAL CORRIDOR

The forest fire in Sydney is more in tense. At the same time, the flood caused by heavy rain is also difficult to prevent. Therefore, in the design of the entire airport transfer station, the transportation pipeline is not only used for unit vehicles but also ecological use.



- PLATFORM
allow people to get on vehicles
- REFUGE
let people or animals get away natural disasters
- LOBBY
provide service for residents or tourists

INTRODUCTION

Combining the concept of "ocean currents" with future technology XR and a new ecological corridor focusing on disaster prevention in Sydney; it is committed to finding a balance between the ecological environment and human life. With the dynamic sense of "ocean currents," it depicts the possibility of future transportation of West Sydney Airport to the city and constructs an intelligent technology transportation network between it and surrounding towns in the future.

We also use DesignBuilder, UC-1 for SaaS FRAME, BOXカルバートの設計3D配筋 to analyze some model data.



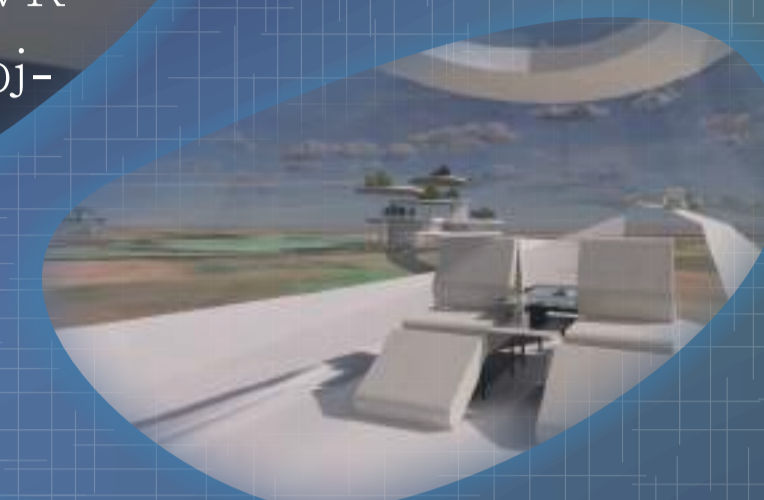
XR

Using XR to guide the route at the airport or introduce commodities in unmanned stores. Opera, pier, aboriginal culture, and unique natural conditions are the features of Australia. XR can combine with them for people. XR also can help older people live effortlessly.

EXTERIOR VEHICLE

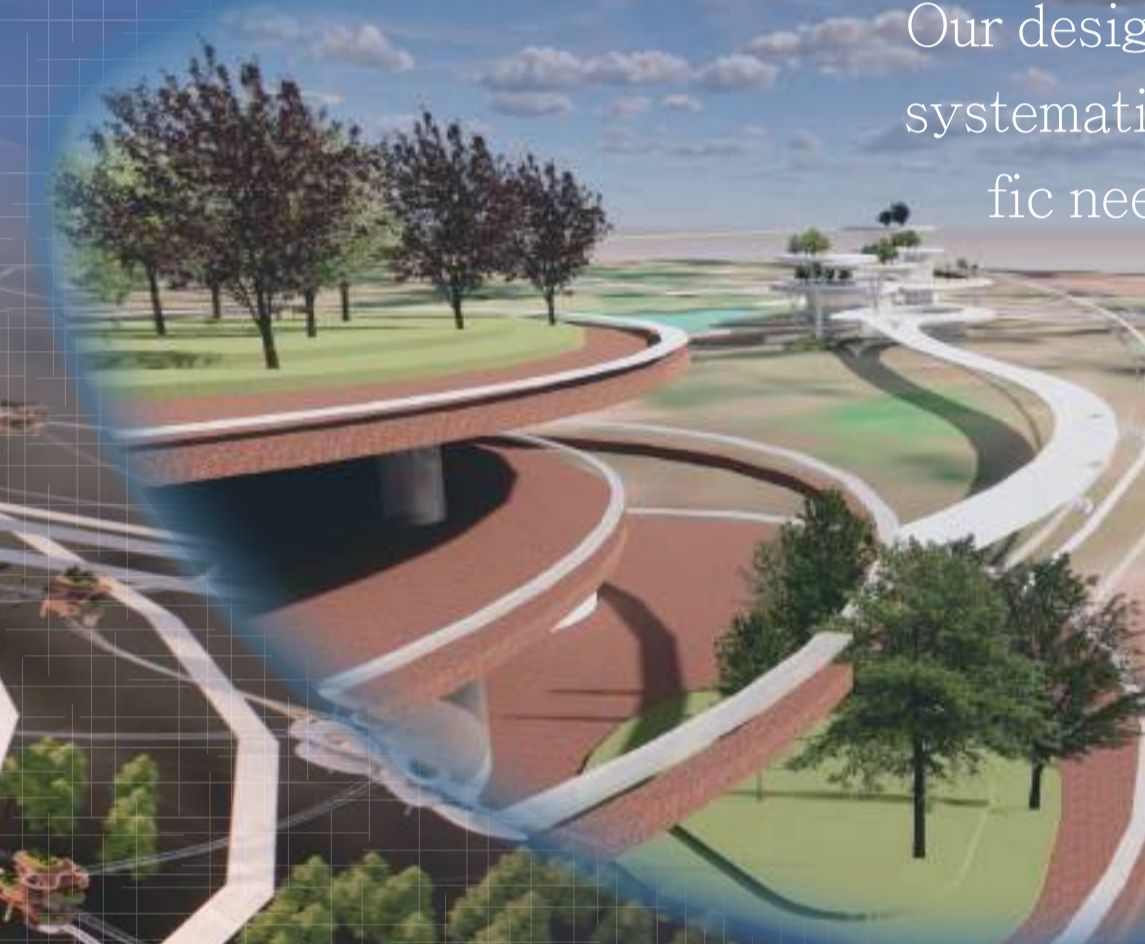


The vehicle was inspired by the yacht in Sydney. By adding a lot of windows, tourists and passengers will be able to see the views outside. We can also use the AVR technology to project some information about Sydney.



TRANSPORT

Our design focuses on systematically treating traffic needs and minimizing environmental impacts. Ecological road network, bright path, road network analysis, and AIOT linkage create an ecologically friendly green Sydney.



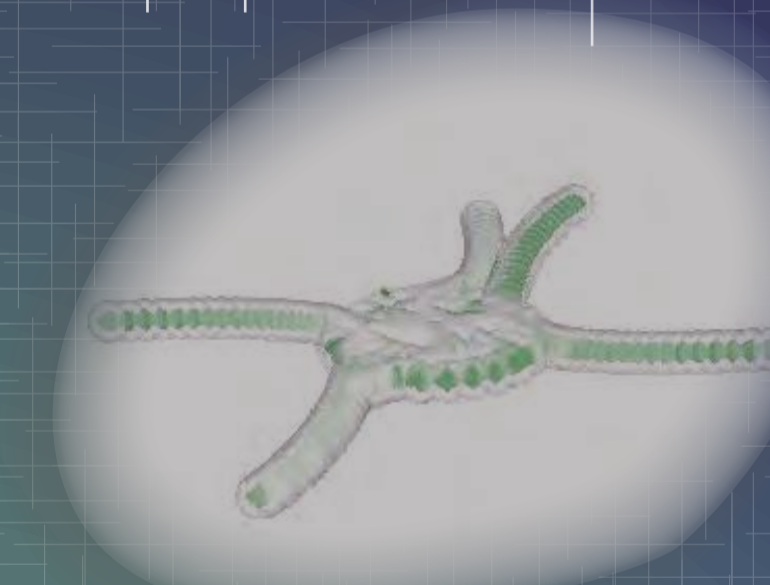
INTERIOR VEHICLE



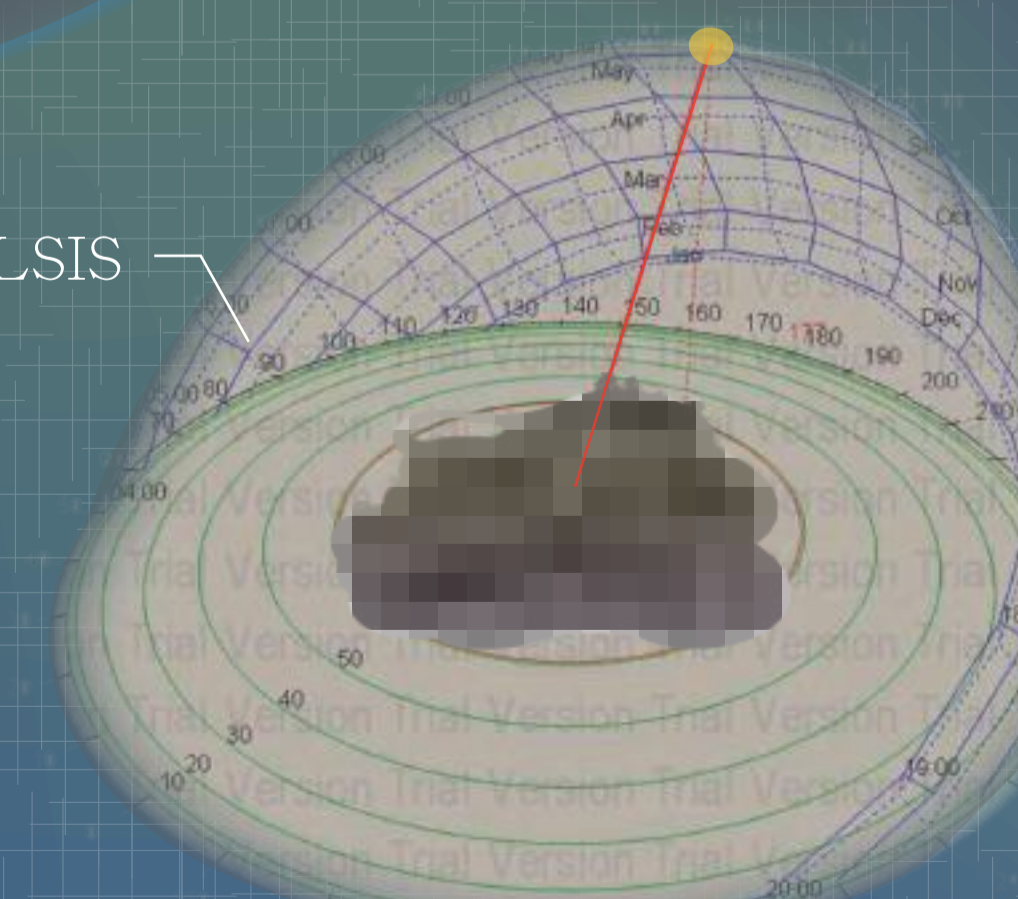
Vehicle design inspired by surfboards. We want tourists and passengers to commute more interestingly. In addition, the floating screen will present all the information passengers need.

SaaS FRAME analysis

X(m)	Y(m)	Z(m)
-3448.917	-353.715	0.000
-3438.024	-380.505	0.000
-3438.024	-380.505	0.000
-3409.544	-24.342	0.000
3748.921	-228.511	0.000
3749.289	-2140.760	0.000



DAY LIGHTING ANALYSIS



VIRTUAL ROBOT



The robot is a projection. When people need it, call it out. Then, it can provide many services for people who need help.