

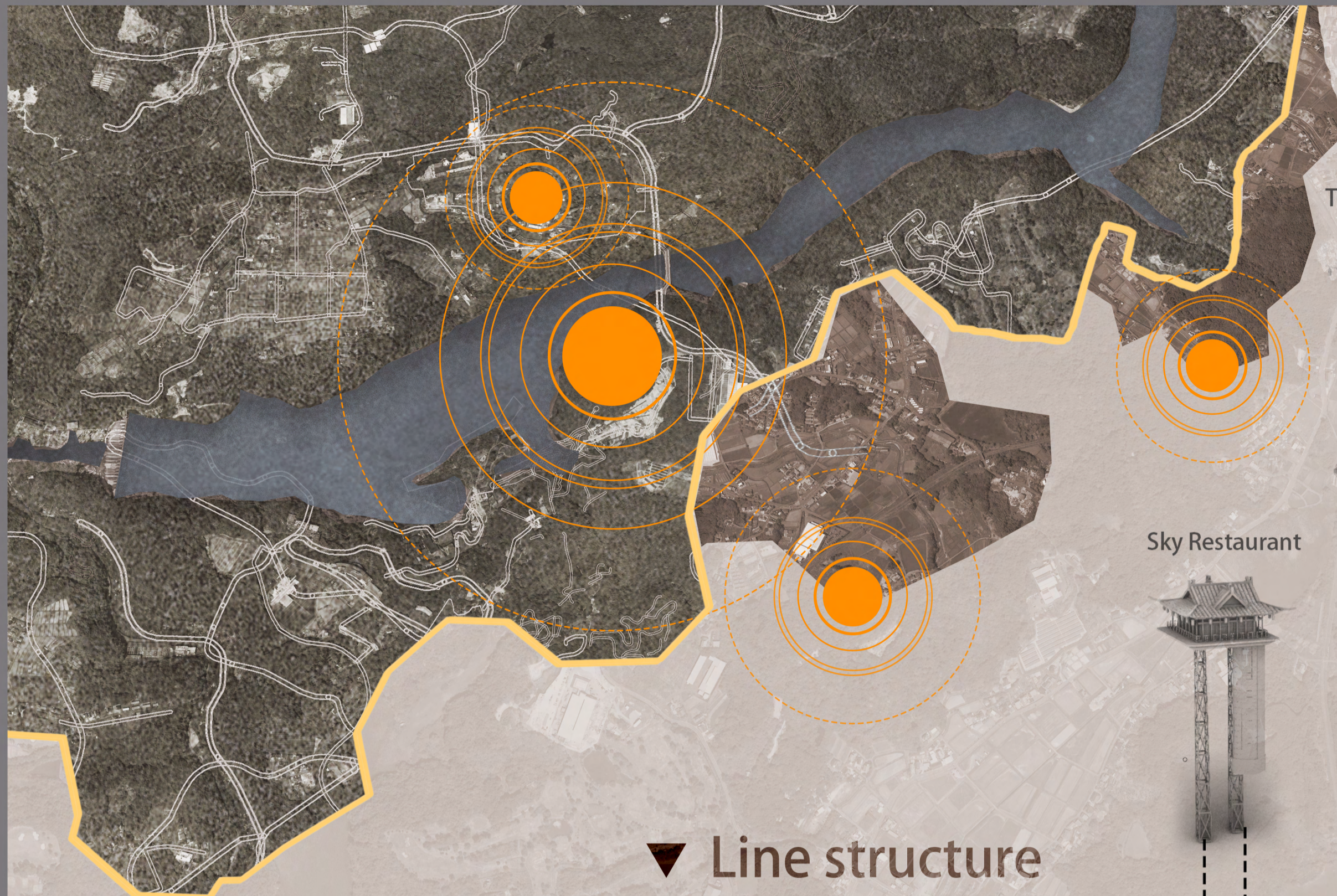
FLOATING FURUSATO

浮遊のふるさと

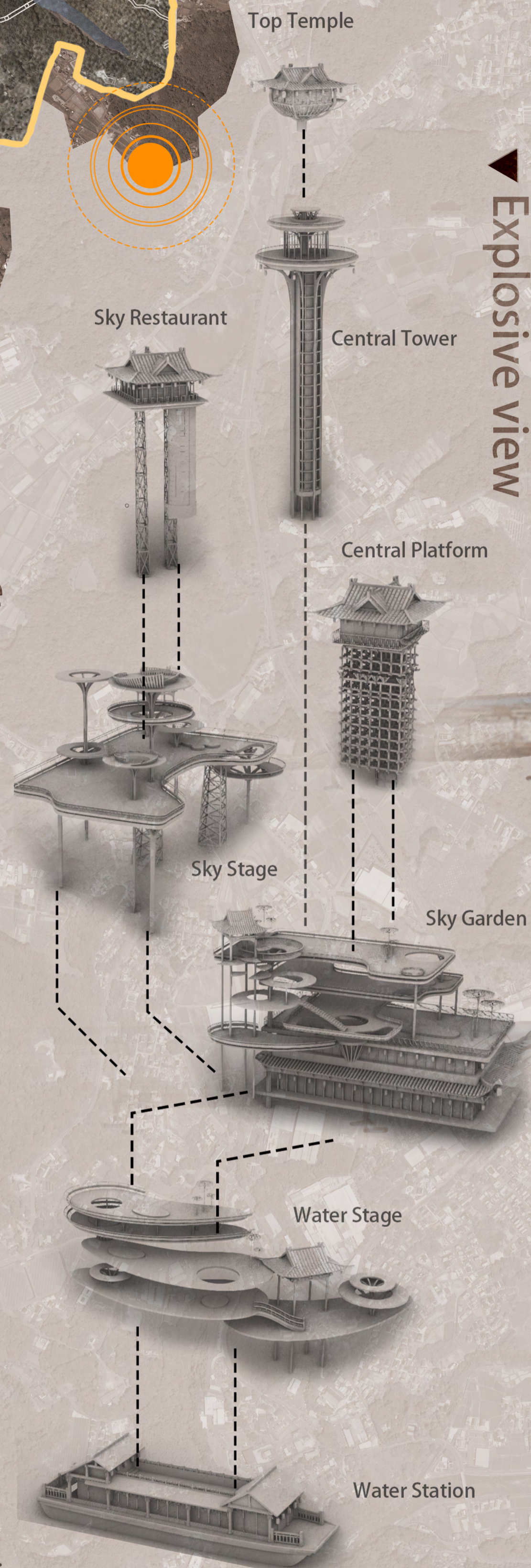
Ena City boasts an innovative multimodal transportation system that seamlessly integrates an aerial cable car and river ferry network, preserving its unique landscape. This system efficiently connects key city points, including stations, the picturesque slopes of Ena Gorge, and Enakyo Wonderland on the opposite riverbank, while minimizing environmental disruption. The stations maintain Ena's rich architectural heritage, blending harmoniously with the natural surroundings.

What sets this system apart is the remarkable feature of its cable cars: they can transform into ferries, providing passengers with the opportunity to enjoy the magnificent views of Ena City from both the air and water. Autonomous driving technology ensures safety and enhances the immersive experience.

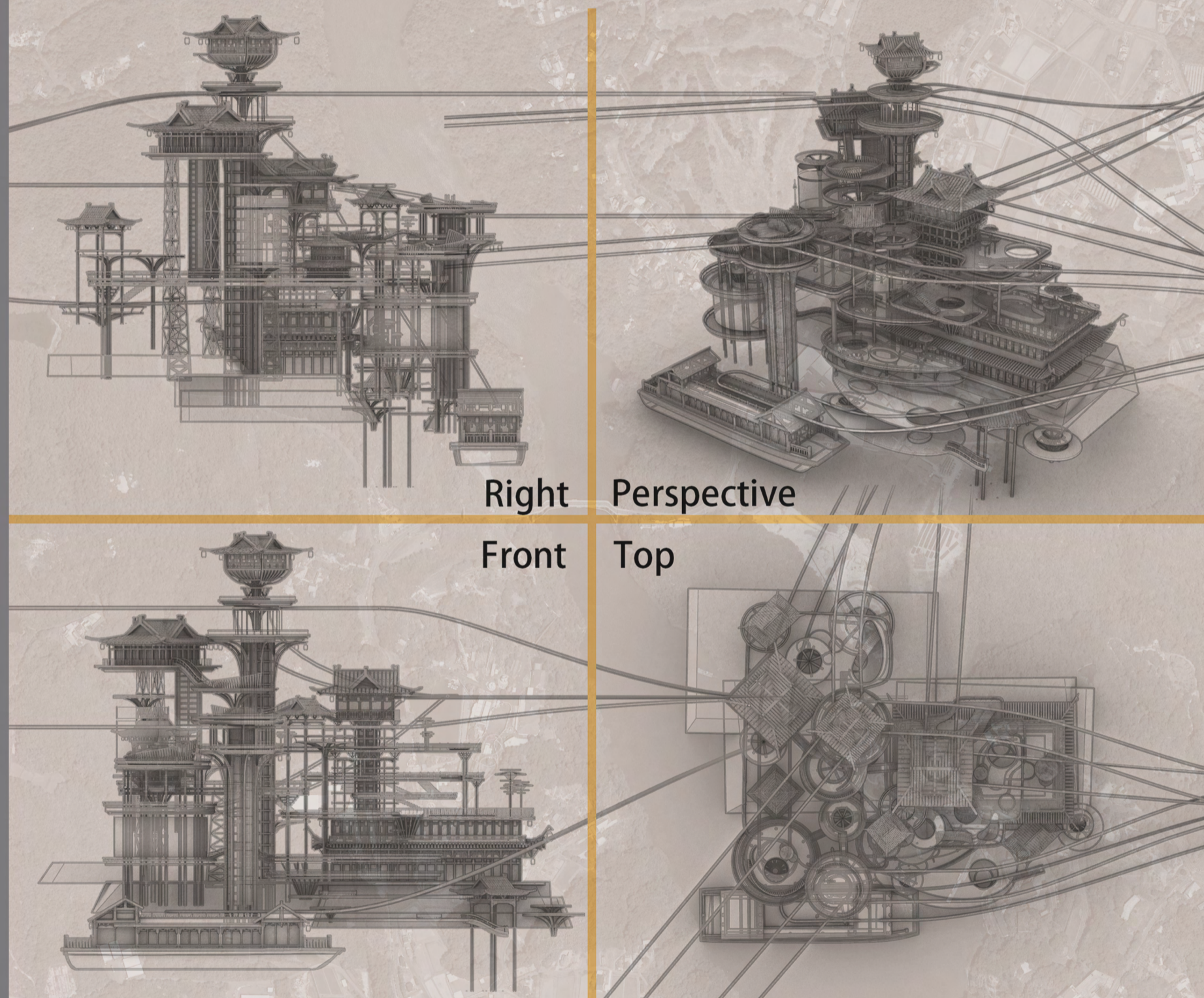
This visionary multimodal transportation system only also offers residents and visitors a sustainable and extraordinary landscapes. enhances Ena City's connectivity but memorable way to engage with its



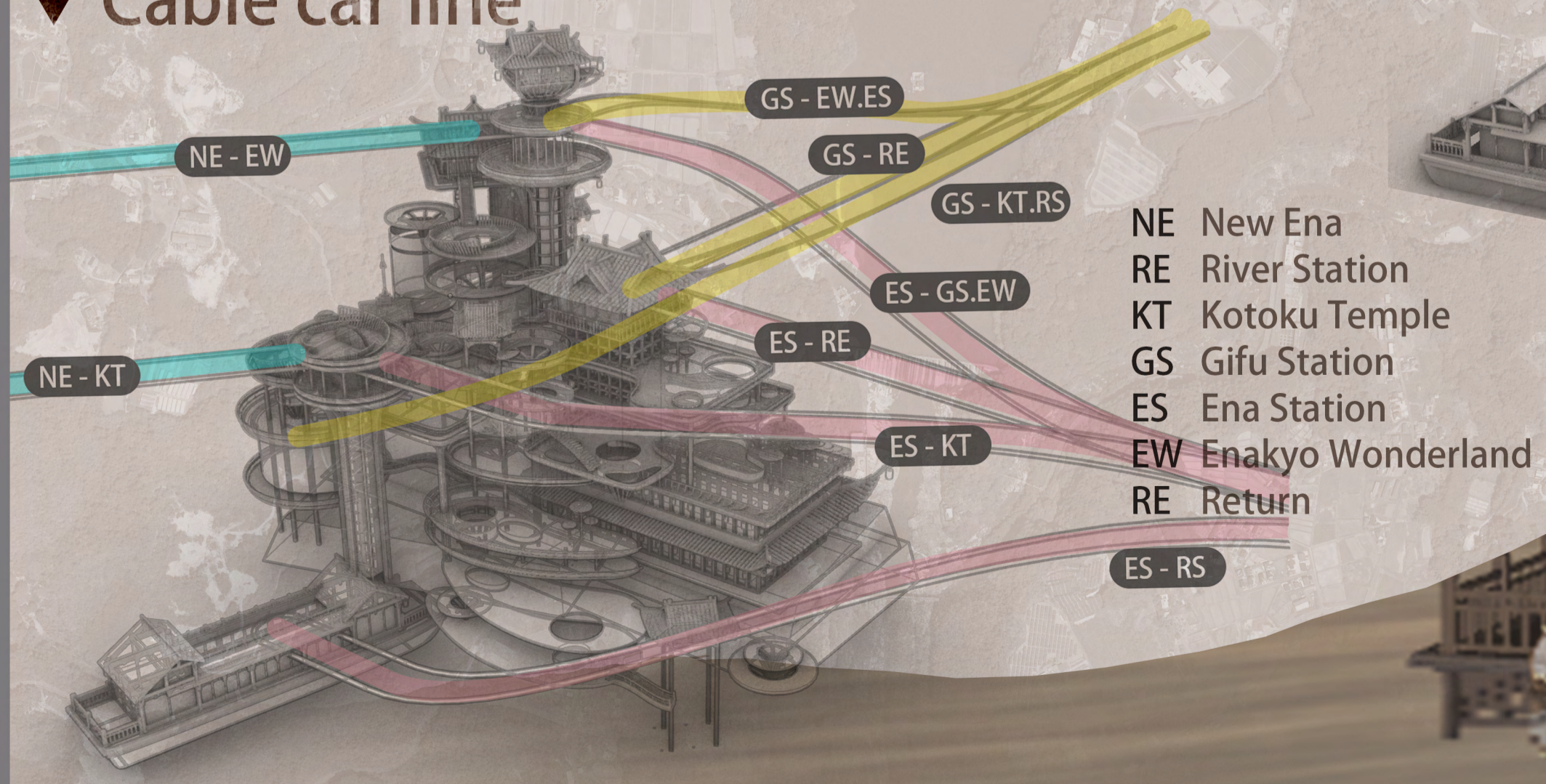
Explosive view



Line structure



Cable car line



Magnetic Levitation Track

